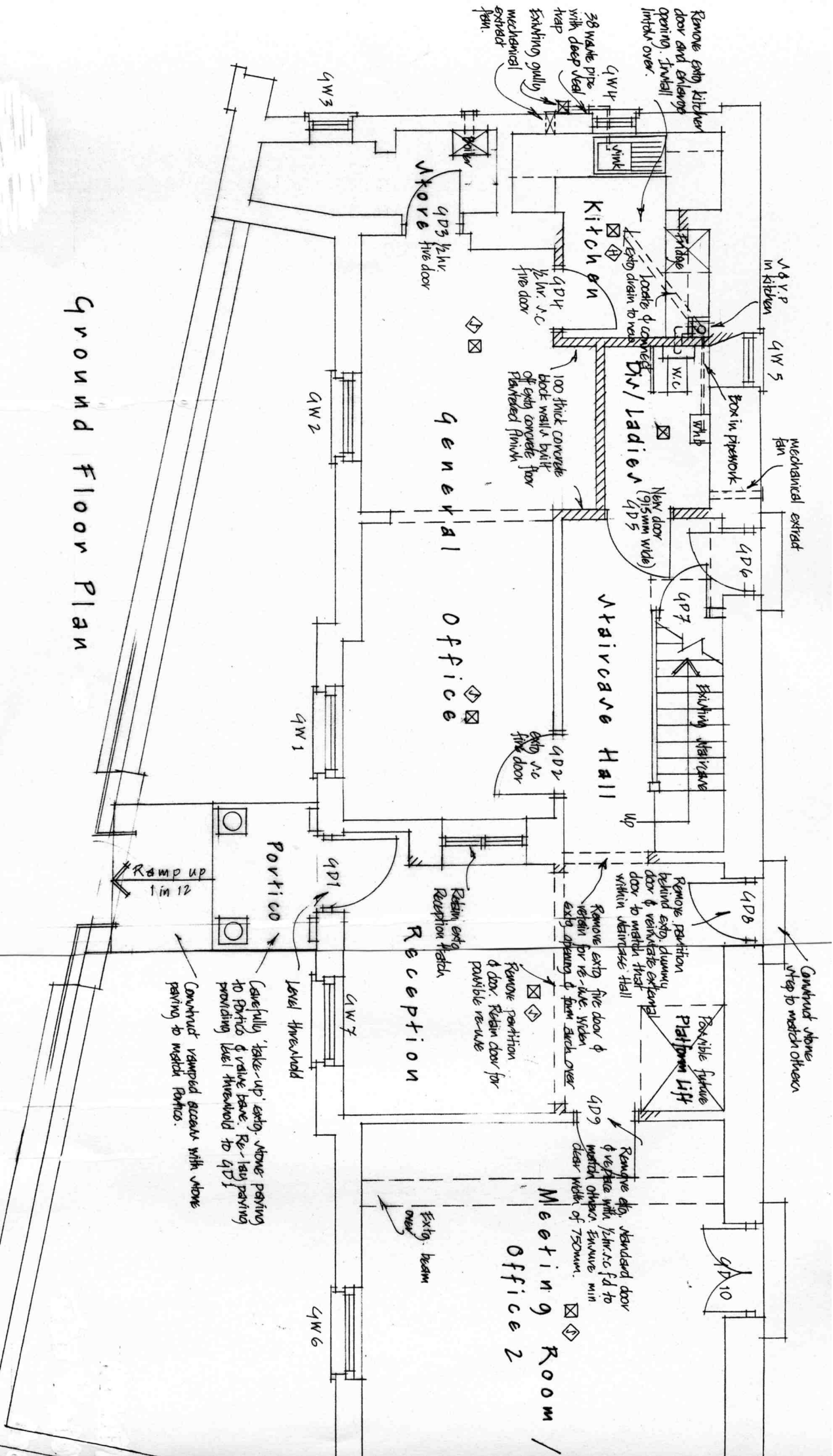


Ground Floor Plan



Remove ext'd kitchen door and enlarge opening. Install 'intra' over.

38 waste pipe with deep steel trap
Existing gully mechanical extractor fan.

V.A.V.P in kitchen

Kitchen

Men/Ladies

General Office

Staircase Hall

Reception

Meeting Room / Office 2

Portico

Carefully 'take-up' ext'd above paving to Portico & valve base. Re-lay paving providing level threshold to QD1
Construct ramped access with above paving to match Portico.

Construct above steps to match others

Remove partition behind ext'd doorway door & re-instate external door to match that within vestibule hall

Remove ext'd fire door & retain for re-use. Widen ext'd opening & form arch over

Retain ext'd Reception fascia

Possible future Platform Lift

Remove ext'd standard door & re-instate with 1/2 hr fire door to match others. Ensure min clear width of 750mm.

Ext'd. beam over

Mechanical extract fan

100 thick concrete block walls built of ext'd concrete floor finished finish

New door (915mm wide) QD5

Existing staircase

ext'd fire door QD2

Retain ext'd Reception fascia

QD8

QD9

QD10

QW3

QW2

QW1

QW7

QW6

QD3 1/2 hr fire door

QD4 1/2 hr fire door

QW5

QD6

QD7

QD8

QD10

Ramp up 1 in 12

Level threshold

Remove partition behind ext'd doorway door & re-instate external door to match that within vestibule hall

Remove ext'd fire door & retain for re-use. Widen ext'd opening & form arch over

Retain ext'd Reception fascia

Possible future Platform Lift

Remove ext'd standard door & re-instate with 1/2 hr fire door to match others. Ensure min clear width of 750mm.

Ext'd. beam over

Mechanical extract fan

100 thick concrete block walls built of ext'd concrete floor finished finish

New door (915mm wide) QD5

Existing staircase

ext'd fire door QD2

Retain ext'd Reception fascia

QD8

QD9

QD10

QW3

QW2

QW1

QW7

QW6

QD3 1/2 hr fire door

QD4 1/2 hr fire door

QW5

QD6

QD7

QD8

QD10

Ramp up 1 in 12

Level threshold

Remove partition behind ext'd doorway door & re-instate external door to match that within vestibule hall

Remove ext'd fire door & retain for re-use. Widen ext'd opening & form arch over

Retain ext'd Reception fascia

Possible future Platform Lift

Remove ext'd standard door & re-instate with 1/2 hr fire door to match others. Ensure min clear width of 750mm.

Ext'd. beam over

Mechanical extract fan

100 thick concrete block walls built of ext'd concrete floor finished finish

New door (915mm wide) QD5

Existing staircase

ext'd fire door QD2

Retain ext'd Reception fascia

QD8

QD9

QD10

QW3

QW2

QW1

QW7

QW6

QD3 1/2 hr fire door

QD4 1/2 hr fire door

QW5

QD6

QD7

QD8

QD10

Ramp up 1 in 12

Level threshold

Remove partition behind ext'd doorway door & re-instate external door to match that within vestibule hall

Remove ext'd fire door & retain for re-use. Widen ext'd opening & form arch over

Retain ext'd Reception fascia

Possible future Platform Lift

Remove ext'd standard door & re-instate with 1/2 hr fire door to match others. Ensure min clear width of 750mm.

Ext'd. beam over

Mechanical extract fan

100 thick concrete block walls built of ext'd concrete floor finished finish

New door (915mm wide) QD5

Existing staircase

ext'd fire door QD2

Retain ext'd Reception fascia

QD8

QD9

QD10

QW3

QW2

QW1

QW7

QW6

QD3 1/2 hr fire door

QD4 1/2 hr fire door

QW5

QD6

QD7

QD8

QD10

Ramp up 1 in 12

Level threshold

Remove partition behind ext'd doorway door & re-instate external door to match that within vestibule hall

Remove ext'd fire door & retain for re-use. Widen ext'd opening & form arch over

Retain ext'd Reception fascia

Possible future Platform Lift

Remove ext'd standard door & re-instate with 1/2 hr fire door to match others. Ensure min clear width of 750mm.

Ext'd. beam over

Mechanical extract fan

100 thick concrete block walls built of ext'd concrete floor finished finish

New door (915mm wide) QD5

Existing staircase

ext'd fire door QD2

Retain ext'd Reception fascia

QD8

QD9

QD10

QW3

QW2

QW1

QW7

QW6

QD3 1/2 hr fire door

QD4 1/2 hr fire door

QW5

QD6

QD7

QD8

QD10

Ramp up 1 in 12

Level threshold

Remove partition behind ext'd doorway door & re-instate external door to match that within vestibule hall

Remove ext'd fire door & retain for re-use. Widen ext'd opening & form arch over

Retain ext'd Reception fascia

Possible future Platform Lift

Remove ext'd standard door & re-instate with 1/2 hr fire door to match others. Ensure min clear width of 750mm.

Ext'd. beam over

Mechanical extract fan

100 thick concrete block walls built of ext'd concrete floor finished finish

New door (915mm wide) QD5

Existing staircase

ext'd fire door QD2

Retain ext'd Reception fascia

QD8

QD9

QD10

QW3

QW2

QW1

QW7

QW6

QD3 1/2 hr fire door

QD4 1/2 hr fire door

QW5

QD6

QD7

QD8

QD10

Ramp up 1 in 12

Level threshold

Remove partition behind ext'd doorway door & re-instate external door to match that within vestibule hall

Remove ext'd fire door & retain for re-use. Widen ext'd opening & form arch over

Retain ext'd Reception fascia

Possible future Platform Lift

Remove ext'd standard door & re-instate with 1/2 hr fire door to match others. Ensure min clear width of 750mm.

Ext'd. beam over

Mechanical extract fan

100 thick concrete block walls built of ext'd concrete floor finished finish

New door (915mm wide) QD5

Existing staircase

ext'd fire door QD2

Retain ext'd Reception fascia

QD8

QD9

QD10

QW3

QW2

QW1

QW7

QW6

QD3 1/2 hr fire door

QD4 1/2 hr fire door

QW5

QD6

QD7

QD8

QD10

Ramp up 1 in 12

Level threshold

Remove partition behind ext'd doorway door & re-instate external door to match that within vestibule hall

Remove ext'd fire door & retain for re-use. Widen ext'd opening & form arch over

Retain ext'd Reception fascia

Possible future Platform Lift

Remove ext'd standard door & re-instate with 1/2 hr fire door to match others. Ensure min clear width of 750mm.

Ext'd. beam over

Mechanical extract fan

100 thick concrete block walls built of ext'd concrete floor finished finish

New door (915mm wide) QD5

Existing staircase

ext'd fire door QD2

Retain ext'd Reception fascia

QD8

QD9

QD10

QW3

QW2

QW1

QW7

QW6

QD3 1/2 hr fire door

QD4 1/2 hr fire door

QW5

QD6

QD7

QD8

QD10

Ramp up 1 in 12

Level threshold

Remove partition behind ext'd doorway door & re-instate external door to match that within vestibule hall

Remove ext'd fire door & retain for re-use. Widen ext'd opening & form arch over

Retain ext'd Reception fascia

Possible future Platform Lift

Remove ext'd standard door & re-instate with 1/2 hr fire door to match others. Ensure min clear width of 750mm.

Ext'd. beam over

Mechanical extract fan

100 thick concrete block walls built of ext'd concrete floor finished finish

New door (915mm wide) QD5

Existing staircase

ext'd fire door QD2

Retain ext'd Reception fascia

QD8

QD9

QD10

QW3

QW2

QW1

QW7

QW6

QD3 1/2 hr fire door

QD4 1/2 hr fire door

QW5

QD6

QD7

QD8

QD10

Ramp up 1 in 12

Level threshold

Remove partition behind ext'd doorway door & re-instate external door to match that within vestibule hall

Remove ext'd fire door & retain for re-use. Widen ext'd opening & form arch over